

Generic Duplex Lift Station Layout

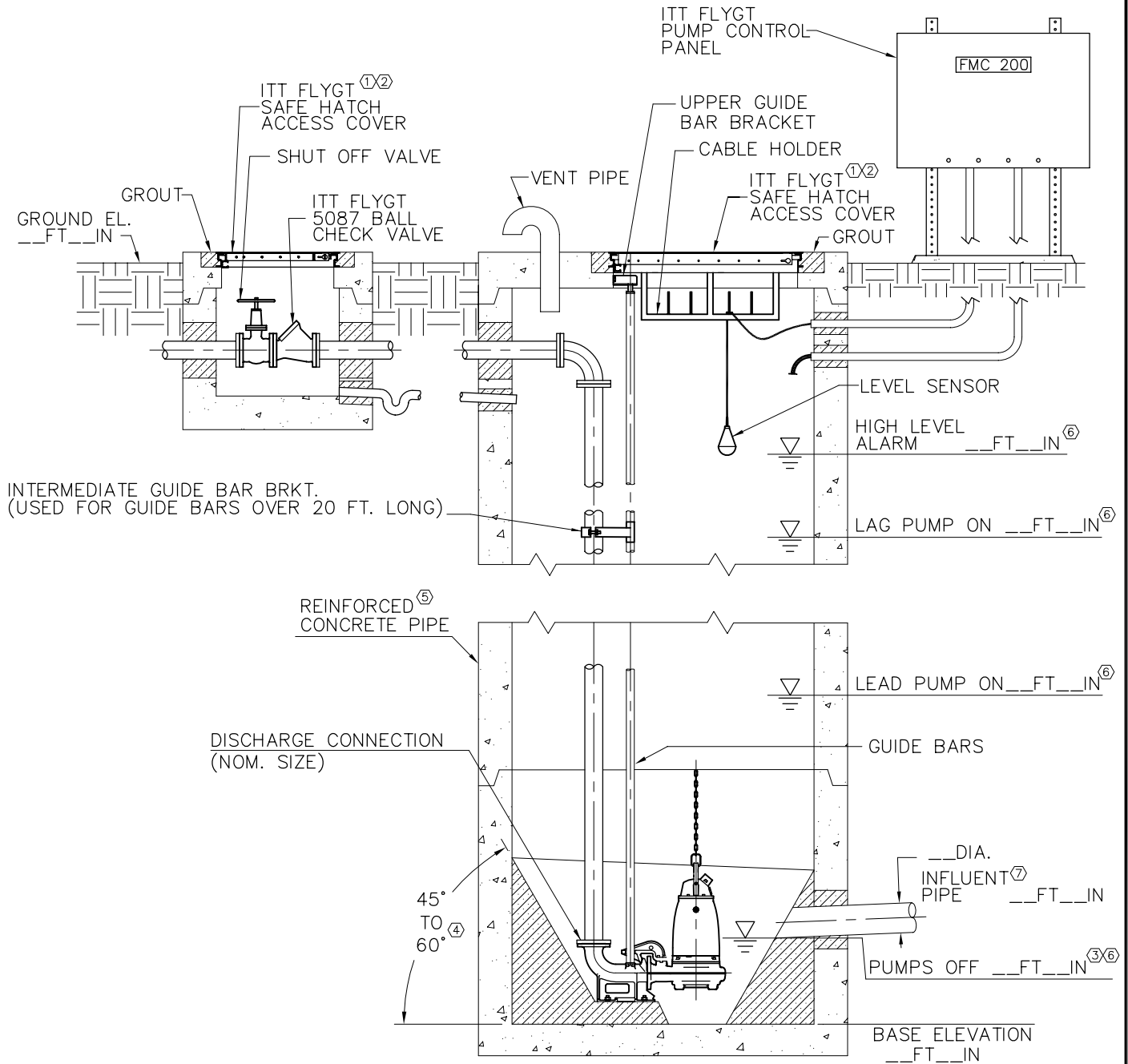
e-Catalog



Lift Station Guide Lines

Issued: 9/05

Supersedes: 5/05



○ NOTES:

1. COVER SHOWN IS A STANDARD DUTY SAFE HATCH WITH ANGLE FRAME. FOR DIMENSIONS ON ACCESS COVERS WITH SAFE HATCH OR WITHOUT SAFE HATCH AS WELL AS HEAVY DUTY OR OTHER TYPES, CONSULT ITT FLYGT.
2. INSTALL ACCESS COVERS PER MANUFACTURER'S INSTRUCTIONS.
3. MIN. LIQUID LEVEL MUST NOT FALL BELOW TOP OF VOLUTE.
4. 60° RECOMMENDED.
5. OTHER MATERIALS AVAILABLE. CONSULT ITT FLYGT.
6. ITT FLYGT LIQUID LEVEL CONTROL MONITORING SYSTEM.
7. GOOD DESIGN PRACTICE DICTATES THAT INFLUENT PIPE ELEVATIONS HIGHER THAN LWL SHOULD BE AVOIDED DUE TO RISK OF AIR ENTRAINMENT, UNLESS SPECIAL ARRANGEMENTS ARE MADE.